



InSoft

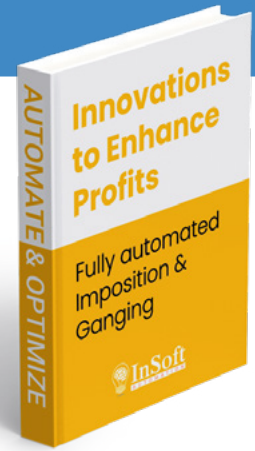
Take your bottomline to the top

Accelerate your workflow with smartest and fastest
imposition and ganging engine in the world of print !

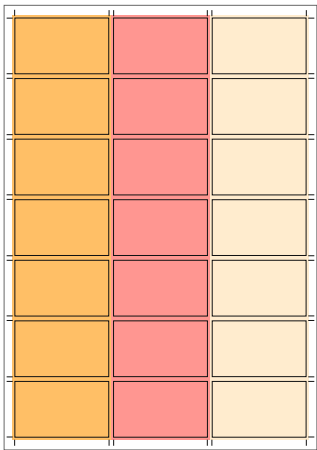


Inject speed into your imposition and ganging

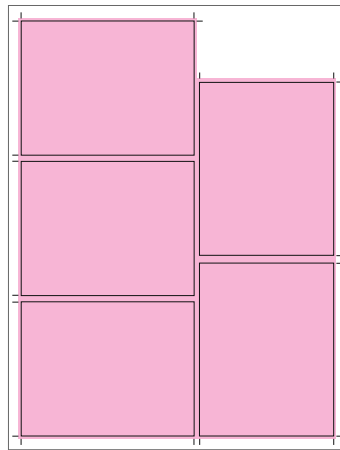
- Rapid layout creation for different print devices.
- Increase yield with reduced paper wastage and lesser press runs.
- Automatically create ganged layouts for your entire schedule.
- Rule based planning to generate layouts as per finishing equipment.
- Gang rectangular or die-cut jobs with same ease.
- Support for QR code, datamatrix codes, bar codes and text annotation marks.



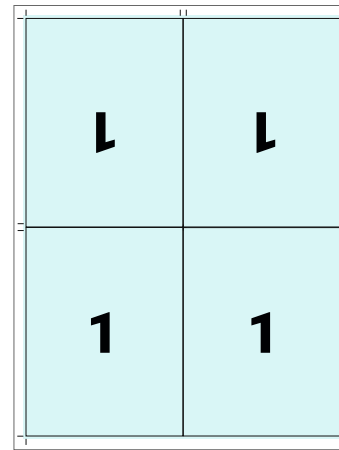
Some of the nesting methods and more - For smooth transition to finishing operations like cutting, tracking, sorting, packing and dispatch.



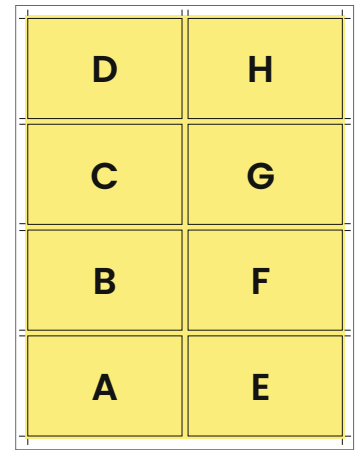
Uniform grid nesting with single job per column



Automatic Dutch Imposition



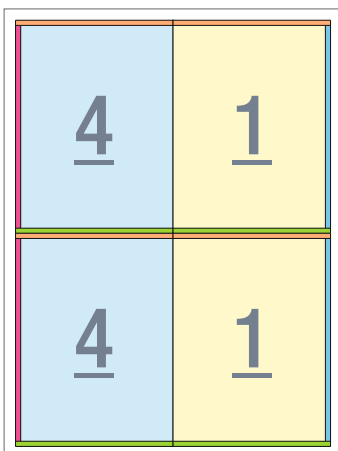
Inner dead cuts with outer bleed



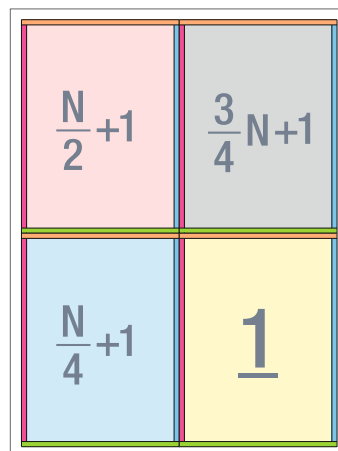
Sequential placement of jobs on layout

Dynamic Imposition of Bound Jobs

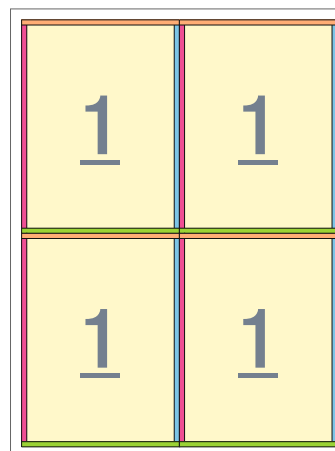
COMPLEXITY SIMPLIFIED by Imp software in book imposition, be it a simple saddle-stitch booklet, perfect bound book or a complex thread sewing bound book, software offers full automation with template-free imposition!



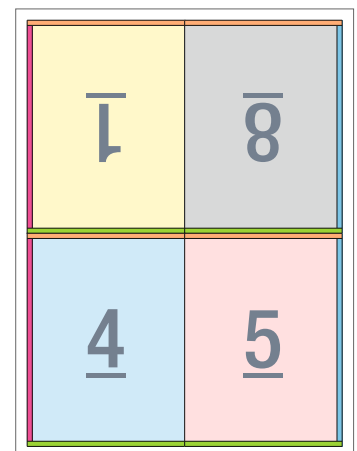
N-Up imposition for booklets



Conventional "Cut & Stack" for perfect & spiral binding



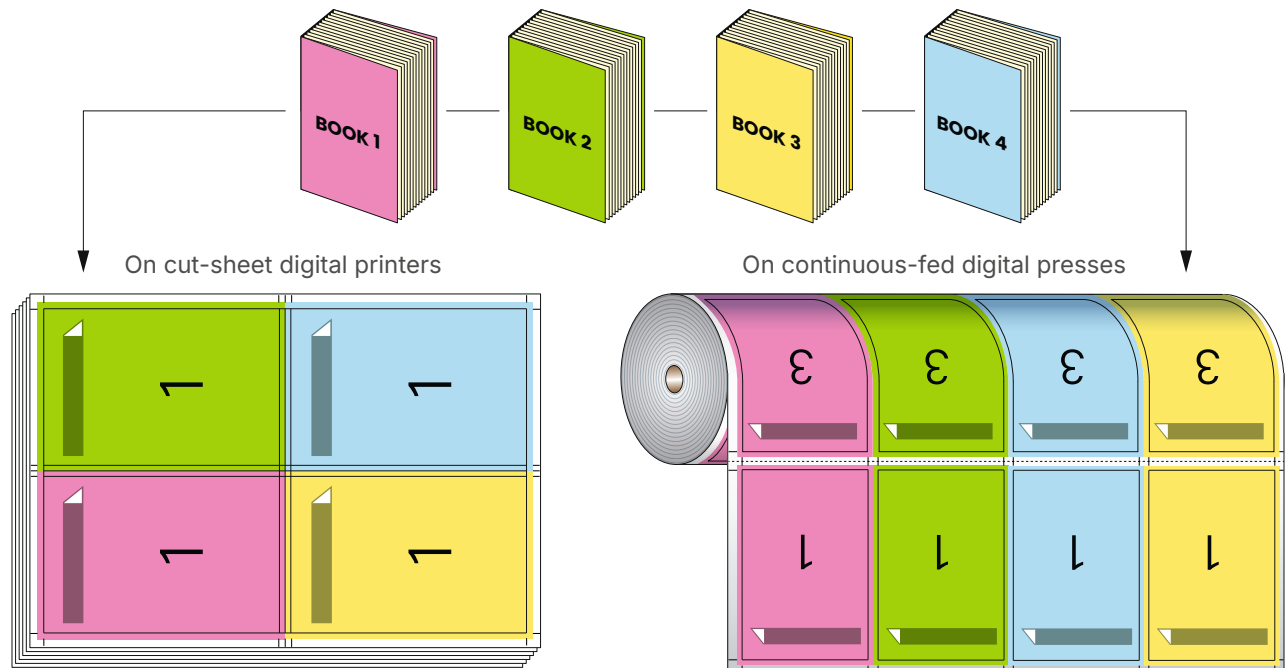
Automated "Cut & Bind" for perfect & spiral binding



Automated folded signature for thread sewing books

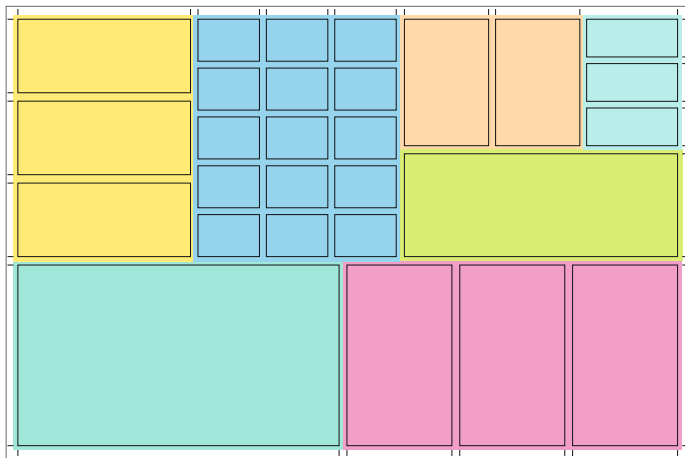
Parallel Printing of Books

This innovative feature dramatically simplifies the complexity in creating imposition schemes where different books of similar sizes and page count are planned together in individual lanes/tracks on the same layout.

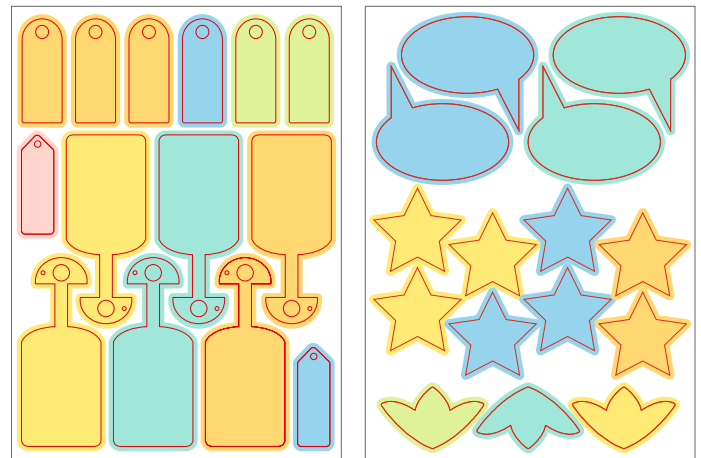


Gang 1000s of jobs - Increase Profits

The smart ganging engine combining jobs of different shapes, sizes, quantities, colors to increase yield and reduce idle time.



Rectangular flatwork ganging

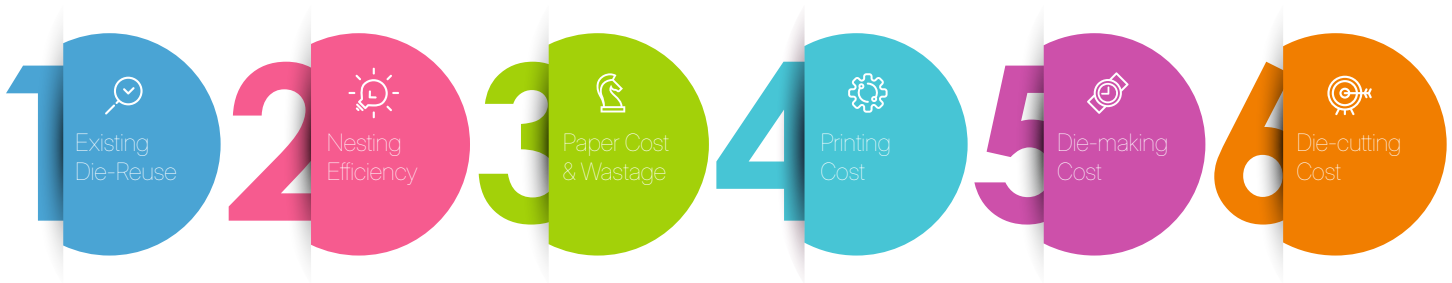


Free-shape jobs ganging

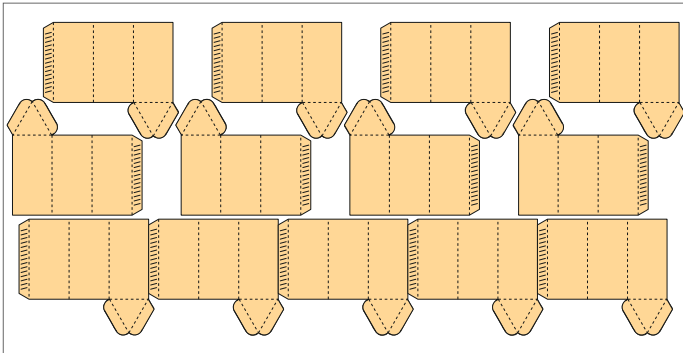
FINIDR s.r.o. printing house is one of the biggest producers of hardback and paperback books in Central Europe. To keep up with our pace and quality, we needed a new sheet assembly system. After six months of evaluation, we chose Imp & Imp Flow from InSoft. The results: higher productivity, automated reports, faster layout edits, and seamless support.

Packaging Layouts

Holistic optimization. As minimizing overall cost is the goal, the software will consider multiple scenarios to strike the right balance between the independent cost functions mentioned below:

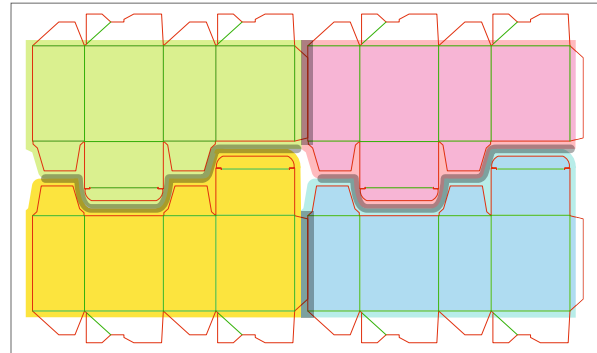


Adaptive Interlocking



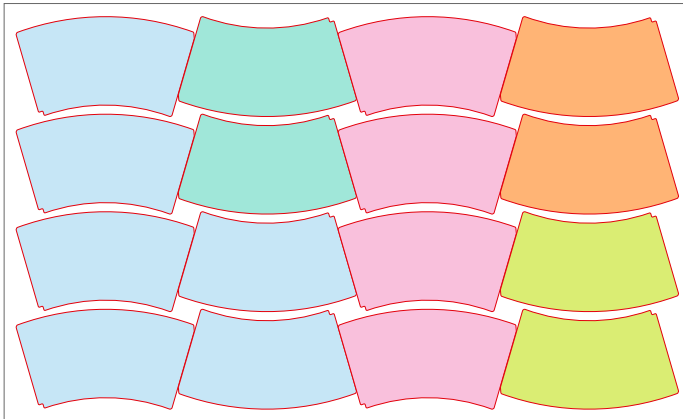
When constrained by sheet sizes or reel widths, software dynamically generates multiple interlocking patterns.

Automated Bleed Resolution



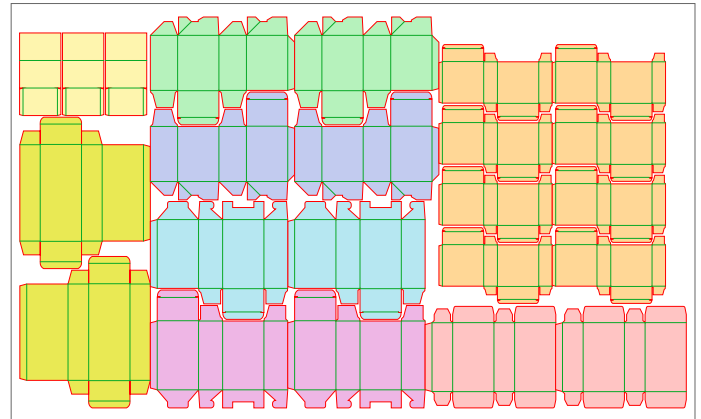
The one & only software to identify and resolve bleeds in the single & double cut regions without human intervention.

Same Die - Multiple Artworks



Automatic calculation of number of die-cavities to be assigned for each version based on copies, inks & coatings.

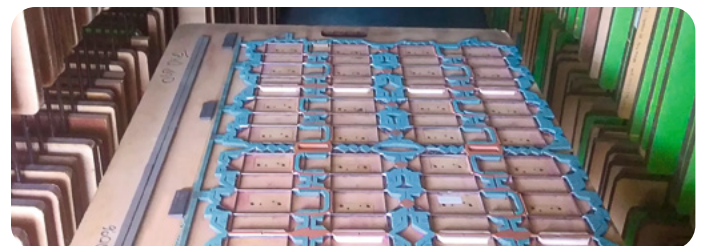
Folding Carton Ganging



Gang 1000s of short run folding cartons to be finished on digital cutting devices.

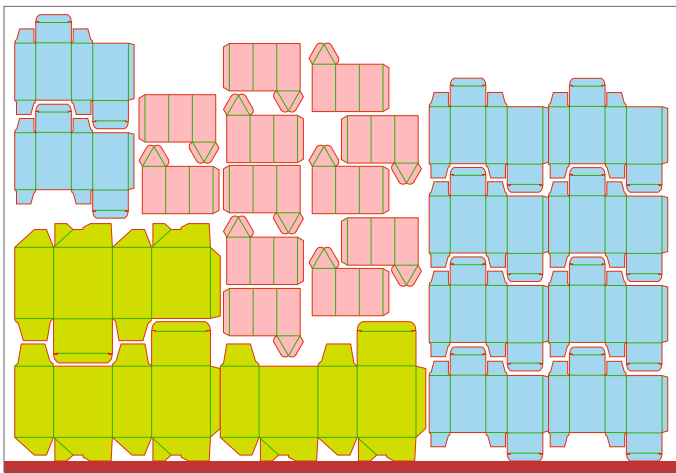
Are you sure you don't have a matching die for a new order? Does it take hours to find one?

With "Die-Tool Library" feature, a matching die-tool can be searched within seconds using shape scan technology - No metadata required !

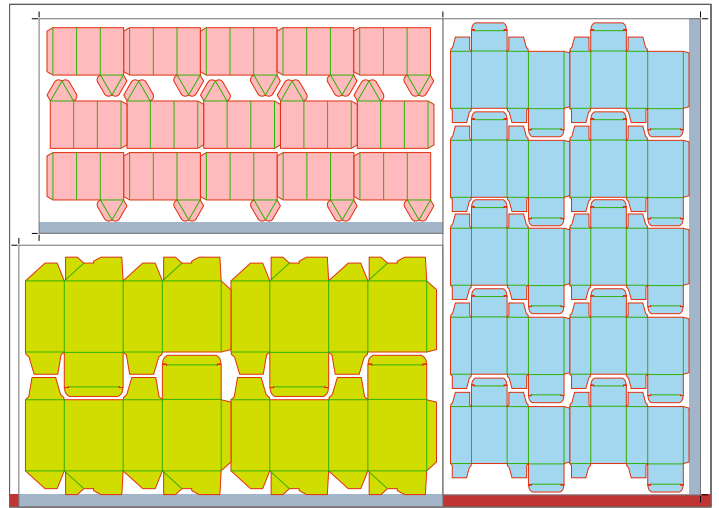


"No-mix ganging" - A powerful new feature

Each job is nested or packed into an isolated section on a big sheet. After printing, each such section can be separated by guillotine cuts, creating sub-sheets that contain only one part for die cutting and finishing. This eliminates sorting and chance of mixing jobs for packing and shipment. An invention such as this has great potential for improving the bottom line!



Legacy ganging



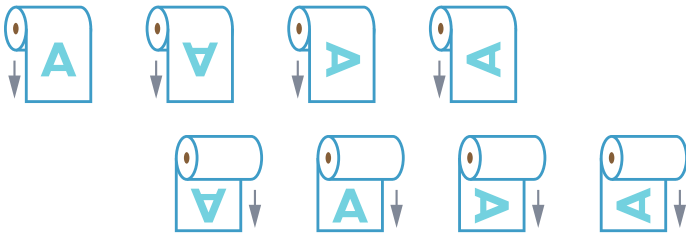
Novel no-mix ganging

Imp software for DIGITAL LABEL PRODUCTION

The challenge to produce and deliver increasing number of SKUs and short runs in demanding time frame ends here.

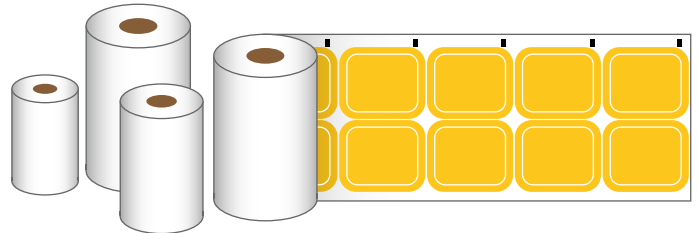
Unwinding Direction of Labels

Define the preferred reel unwinding direction per job and the software automatically orients labels on the layout.



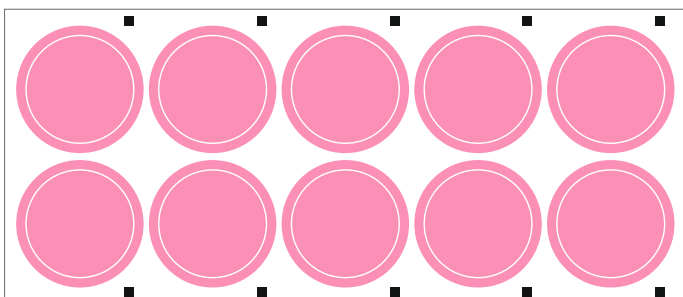
Label Step & Repeat

Software intelligence selects optimal reel width, computes number of ups & lanes as per order quantity.



Dynamic Eye Marks

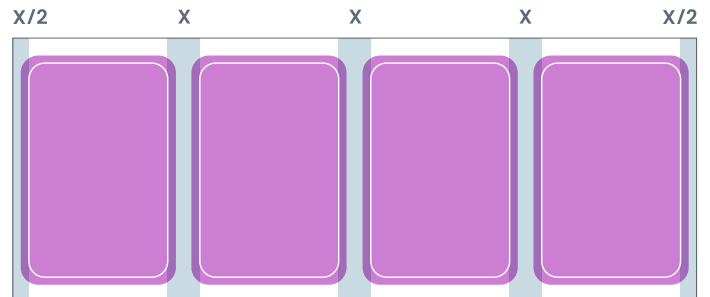
Exercise full control and automation on how eye-marks for registration and finishing are placed on the layout.



Printing Direction →

Uniform Gap between Labels

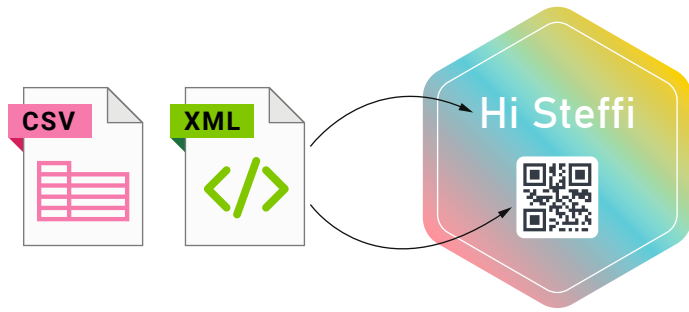
Automated uniform gap between each row on the layout for continuous reel printing and finishing.



Printing Direction →

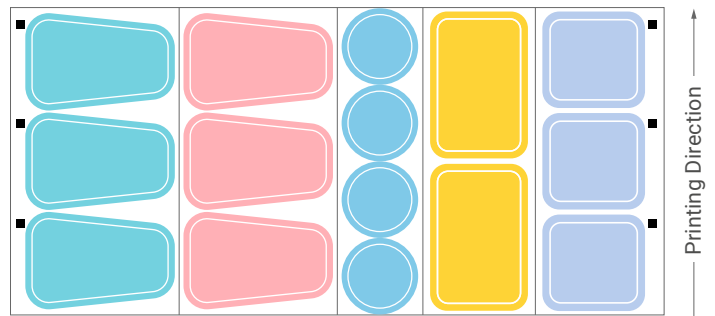
Variable Data

Add personalized QR codes, bar codes & text from CSV or XML file to each SKU.



Lane Planning

Lane ganging optimizing reel width with control on number of lanes as per number of knives on slitting device.



Versioning

Gang different versions of same label order of different quantities and UPC Codes with complete control on number of lanes and no-mixing of same UPC on same layout.

Ganging

Create combo-layouts of different labels to optimize material, printing and finishing setups - while maintaining equal gap between each label !

Separations for Embellishments

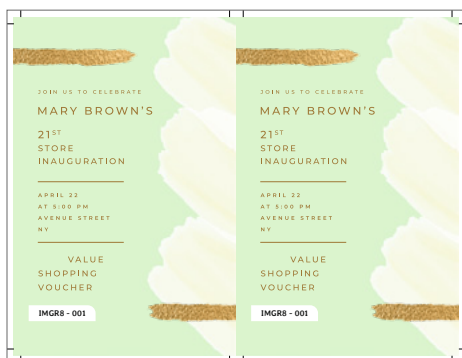
Imp software can export separate imposed layouts for print and embellishment separations such as spot UV, emboss, texture, foiling etc.



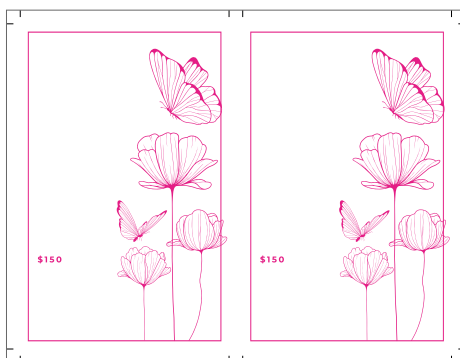
CMYK + Foil + Texture



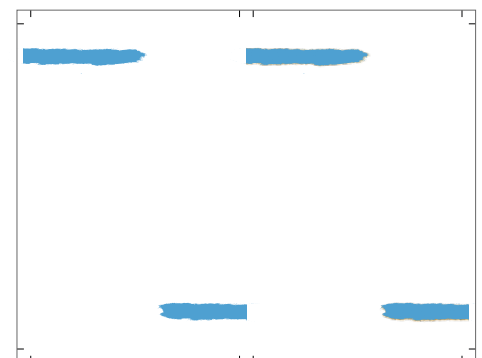
Imposed layout



Imposed file for Print
(minus Foil and Texture)



Imposed file for Foiling
(minus CMYK and Texture)

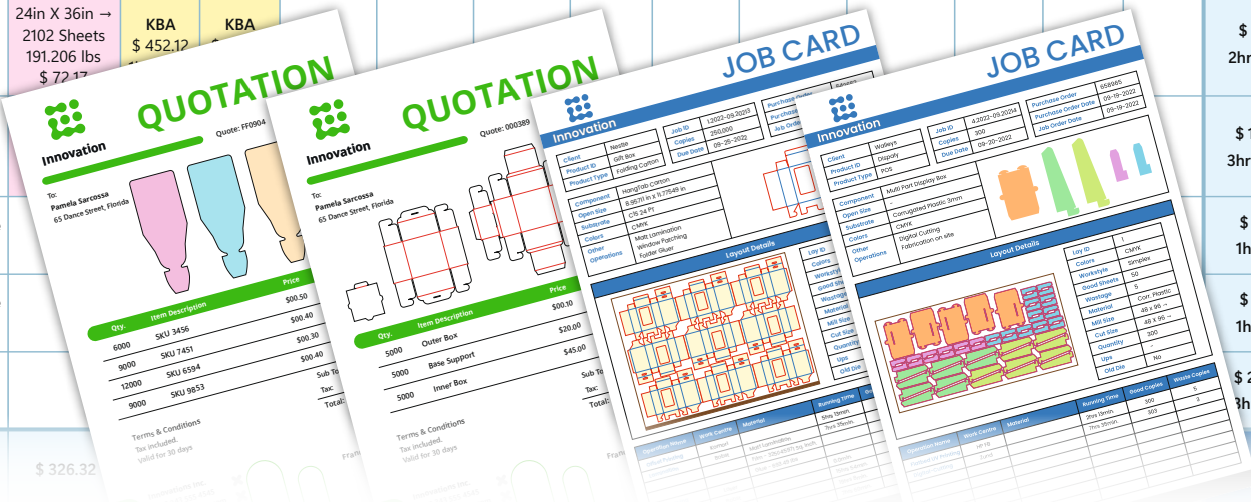


Imposed file for Texture
(minus CMYK and Foil)

Imp+ Estimation - Take the guesswork out of your numbers

Imp+ is a unique print estimation software powered by a smart layout planning engine. Get accurate quotes, job routing data and a detailed job-card with a single click.

ESTIMATION DETAILS (CASE BINDING BOOK)													
Layouts	Paper/Board	Printing		Lamination (Front)	Spot UV (Front)	Guillotine Cutting	Folding	Sewing	Book Block Making	Casing In	Shrink Wrap	Packing	Dispatch
		Front	Back										
Layout 2 Inner Pages	24in X 36in → 2102 Sheets 191,206 lbs \$ 72.17	KBA \$ 452.12 1hr 9min.	KBA \$ 423.71 1hr 4min.										\$ 948.00 2hrs 14min.
Layout 1 Inner Pages	24in X 36in → 2102 Sheets 191,206 lbs \$ 72.17	KBA \$ 452.12	KBA										\$ 948.00 2hrs 14min.
Layout Cover													\$ 1005.72 3hrs 48min.
Signature 2													\$ 169.50 1hr 8min.
Signature 1													\$ 169.50 1hr 8min.
Product													\$ 2270.48 3hrs 21min.
													\$ 511.20 58min.



Imp CLI & API Integration

ImpCmd. Imp command line interface:

- Ease of Use: Easy to integrate and launch from any system.
- Parallel Processing: Run multiple instances of ImpCmd on the same system, leveraging CPU threads to process multiple jobs simultaneously.
- Enhanced Workflow Speed: Perfect for customers aiming to optimize workflows and reduce processing time.
- Scalable Licensing: A special license enables 'N' parallel instances, tailored to your specific needs.

This tool allows users to efficiently orchestrate and execute tasks via command line, while unlocking parallel processing capabilities.

Imp REST Based API

These APIs offer a flexible and robust solution for automating workflows, and compatibility across all modern programming languages. Developers and integrators can easily access:

- Interactive Web Client: Live demos and testing capabilities for seamless integration.
- Comprehensive Documentation: Fully detailed Open API (Swagger) documentation to guide every step of the integration process.

Harness the power of these REST APIs to unlock the full potential of Imp and elevate your automation game.

.Net API Integration

A comprehensive SDK (software development kit : API) on .Net 6 is also available for integration.

Output Options

Export Options

Export imposed PDF/JDFs for print. Cut files in JDF/PPF for guillotines & CF2, DXF, PDF, PLT or ZCC for die-layouts.

Reports and Data Exchange

Export comprehensive data of layouts, costs, operations and materials used in PDF, XML, CSV or MXML formats.

Layout 1

Sheet		Press		Cost details	
Material	COATED_PAPER, 130gsm	Press	02 Offset B1 8C Perf	Sheet coverage	78.42%
Size	638mm x 942mm from 711.2mm x 1016mm	Colors	CMYK	Material Cost	\$ 328.40
Grain	Along 638mm	Coatings	None	Printing Cost	\$ 431.80
Work style	Perfected	Make ready time	55.00 min.	Total Cost	\$ 760.20
Copies	1,520 (1,000 + 520)	Running time	12.16 min.		
		Printing plates	8		
		Back side printing	Yes		

Name	Trim size	Front Inks	Back Inks	Ups	Quantity	Area usage	Folding Template	Page range
Inner_Pages	W932 x H608	CMYK	CMYK	1	1,000/1,000	100.00%	16-7	1 - 16

Lights Out Automation

Imp Flow

A hot-folder based software application built on top of Imp software. It leverages the inherent intelligence of the Imp software to provide unparalleled automation in layout planning and imposition.

Imp software is the most powerful and dynamic imposition software I have ever used! Imp ensures that operators consistently produce impositions perfectly aligned with your in-house machines, eliminating human error. Fantastic development...it really has changed our business for the better.

Andy Kent | Head of Workflow & Automation
PrintedEasy.com UK



SWITCH Integration

Imp Flow application seamlessly integrates into your SWITCH flow to give end-to-end automation. First time the file is touched is when it is sent on printing device.

Connected Automation

Imp software generates industry standard JDF files for your programmable guillotines, folding machines, binderies and three-knife trimmers.

"What do you have to be able to do at Prepress Automation? Quite a lot. An affinity for the printing industry. Technical knowledge of printing presses and processes. And at the same time, you need programming experience. Because Prepress Automation fulfills the difficult task of bringing together two worlds – the printing industry and IT. With IMP, we are able to combine these two factors reliably and efficiently."

André Höckelmann | Manager of Automated Imposition Solutions | Flyeralarm, Germany



For customized online demo, please write to us at sales@insoftautomation.com or visit www.insoftautomation.com



Scan to watch product videos

