



InSoft

Amplify Profits

Will an accurate cost estimate help you win more orders ?



Unlock hidden profits in packaging printing:

- Win orders with competitive pricing without compromising on margins
- Increase yields and reduce idle times
- Optimize overall costs with the smart nesting solution
- Generate accurate estimates without CAD/prepress involvement

www.insoftautomation.com

ESTIMATION: TAKE THE GUESSWORK OUT OF YOUR NUMBERS

Can your current estimating system do the following ?

- Enable sales and CRM teams to work independent of CAD department.
- Add/remove/edit work-centers without program code changes.
- Enables multiple logics to amortize fixed process cost & storage cost for staggered deliveries and more...
- Generate accurate optimized layouts, which are ready for production.
- Compute cost efficient job routing from start to dispatch.
- Generate fully customizable quotes & job cards that adapt dynamically to different product types.

ESTIMATION DETAILS ✕											
Layouts	Paper/Board	Offset Printing	Lamination	Spot UV	Die Making	Die Cutting	Window Patching	Folder Gluer	Packing	Dispatch	
Layout	C1S 24PT 28in X 40in → 30397 Sheets 19784.155 lbs \$ 11116.79 @ \$ 562 per 1000 lbs	Komori \$ 3209.69 5hrs 55min.	Bobst \$ 1058.71 8hrs 24min.	Proteck \$ 756.09 10hrs. 28min.	Laser \$ 801.38 0.0min.	Bobst \$ 2050.93 16hrs 24min					\$ 18993.59 41hrs 11 min.
Carton							Bobst \$ 1308.66 19hrs 38min.	MK \$ 680.21 8hrs 30min.			\$ 1988.87 28hrs 8min.
Product									Packing \$ 363.79 3.3 min.	Dispatch \$ 50.00 0.0min.	\$ 413.79 3.3min.
	\$ 11116.79	\$ 3209.69 5hrs 55min	\$ 1058.71 8hrs 24min	\$ 756.09 10hrs 28min	\$ 801.38	\$ 2050.93 16hrs 24min	\$ 1308.66 19hrs 38min	\$ 680.21 8hrs 30min	\$ 363.79 0.0 min.	\$ 50.00	\$21396.25 69hrs 22min.

Cost efficient job routing is computed before generating the quote/cost, which means a complete job-card can be generated at the time of estimation.

IMP has been a valuable tool for SunDance allowing cost reductions in material use by providing a solid solution for nested, irregular shapes for our folding carton division. A perfect complement to our Tharstern MIS! Estimators can quickly and easily determine the most competitive imposition and transfer that layout directly to the die making team which streamlines our workflow significantly. Would highly recommend for any shop who wants to take advantage of multiple version or gang run projects.

John Henry Ruggieri



Orlando, FL

COST-BASED LAYOUT PLANNING: AUTOMATE & OPTIMIZE

Still waiting for hours to get the layout from CAD department ?

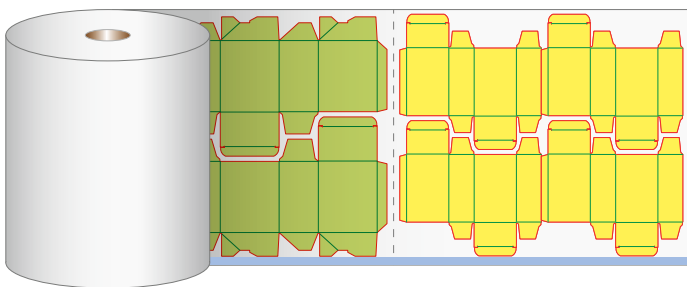
Imp software is a smart tool that will empower you to generate efficient layout plans for any complex job in real time!



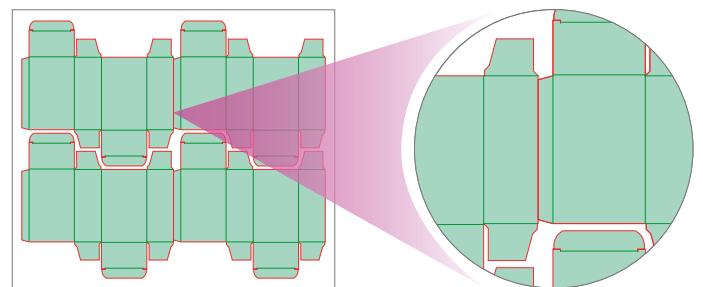
Holistic optimization. As minimizing overall cost is the goal, the software will consider multiple scenarios to strike the right balance between the independent cost functions mentioned below:



Reel Sheeting. Software's ability to suggest sheet sizes from the paper / board reels in the inventory results in huge paper savings.



Intelligent Single Cuts. Just mark non-critical region(s) on the job and the software will know where to make single cuts on the layout.



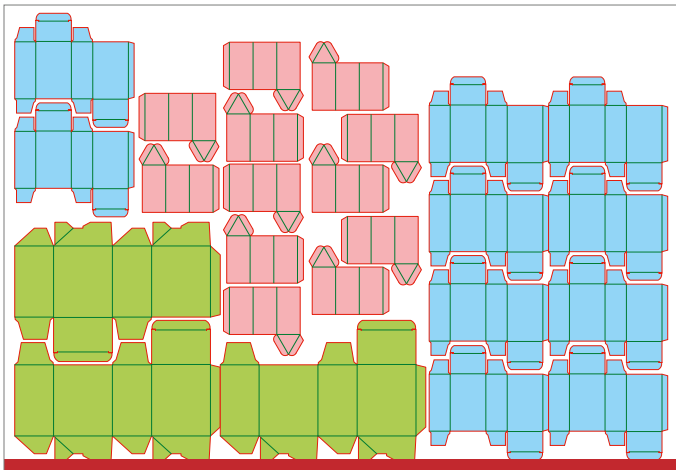
Are you sure you don't have a matching die for a new order? Does it take hours to find one?

With "Die-Tool Library" feature, a matching die-tool can be searched within seconds using shape scan technology - No metadata required !

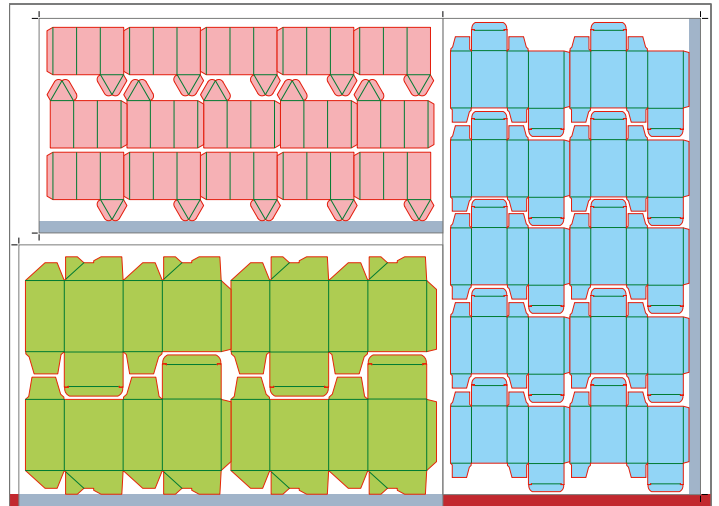


“No-mix ganging” – A powerful new feature

Each job is nested or packed into an isolated section on a big sheet. After printing, each such section can be separated by guillotine cuts, creating sub-sheets that contain only one part for die cutting and finishing. This eliminates sorting and chance of mixing jobs for packing and shipment. An invention such as this has great potential for improving the bottom line!



Legacy ganging



Novel no-mix ganging

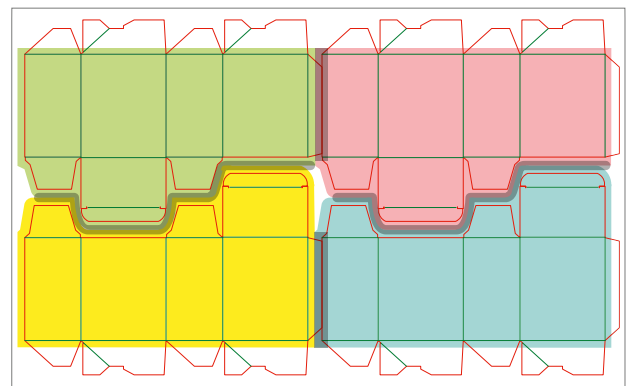
Ganging Multiple Versions. Automatic calculation of number of die-cavities to be assigned for each version based on quantities, colors and coatings!



API Integration. A comprehensive SDK (software development kit: API) on .Net6 is also for integration with MIS/ERP or custom developed solutions.

Your Business - Your Rules. Software provides options to use different planning rules as per product and press type.

Zero manual intervention to identify and resolve bleeds in single & double cut regions. Ensuring accuracy, eliminating errors!



Comprehensive Reports And Data Exchange. Imp software can export comprehensive data of layouts, costs, operations and materials used in print, XML, CSV or MXML formats.

Export Options. Export imposition PDF or JDFs for print. Die-layouts in CF2, DXF, PDF, PLT or ZCC (Zund) format.



For customized online demo, please write to us at sales@insoftautomation.com or visit www.insoftautomation.com



Scan to watch product videos

