



**InSoft**  
AUTOMATION

Automate & Optimize!



# Scourer

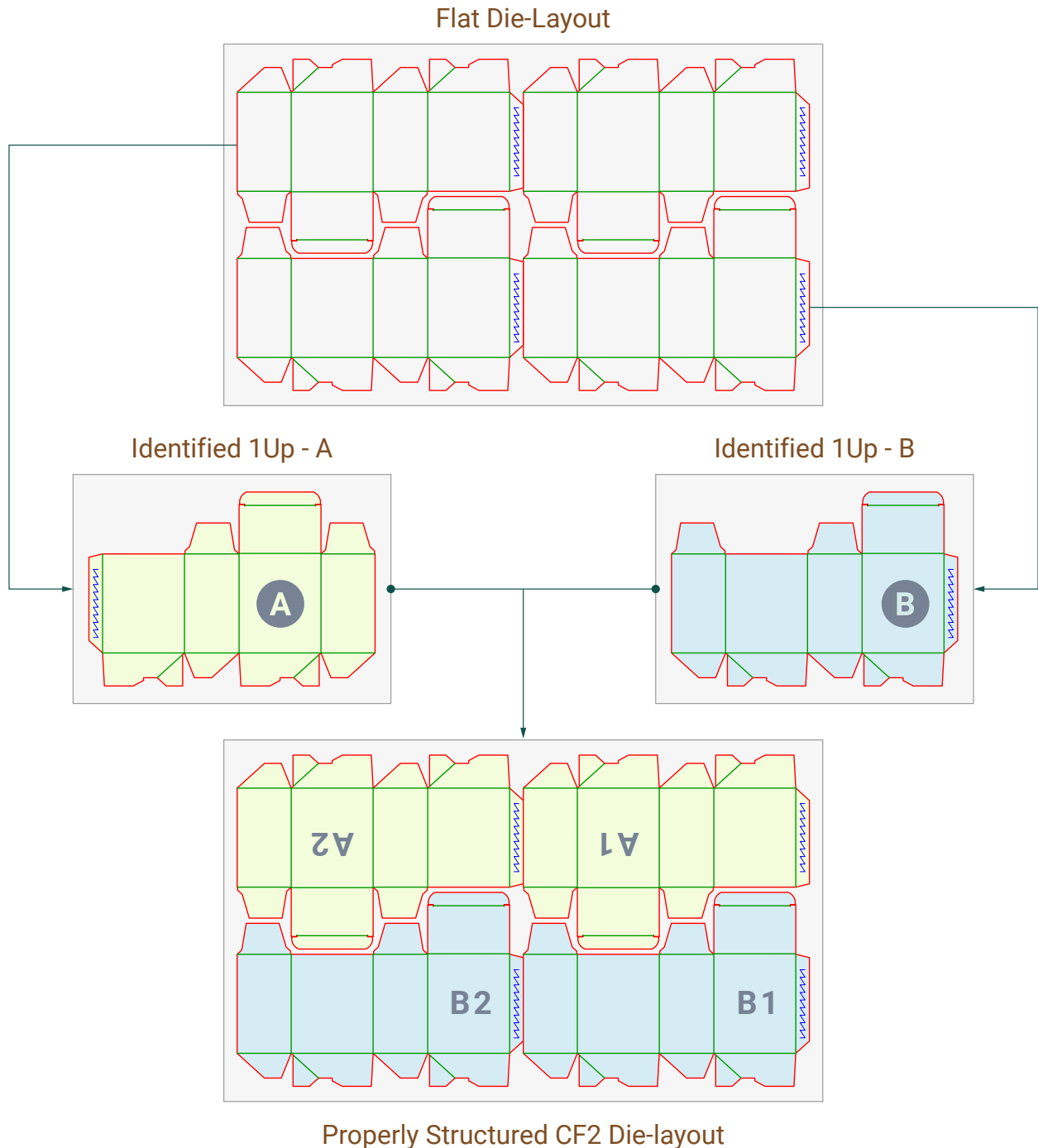
## DIE-LAYOUT CLEANER

[www.insoftautomation.com](http://www.insoftautomation.com)

## About “SCOURER”

Scourer is an add-on application to Imp software that can be used to clean-up and convert existing flat die-layout files for use with Imp or Imp’s die library.

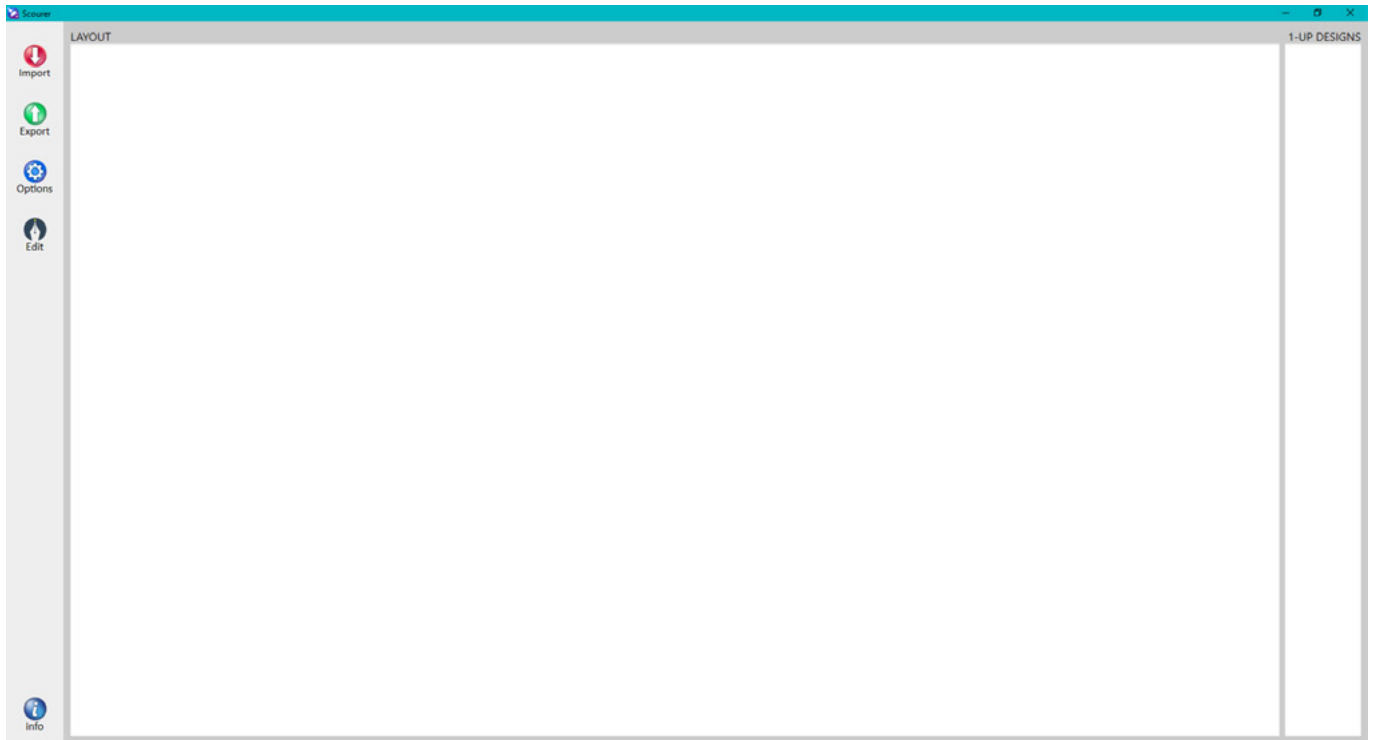
It converts flat die-layouts in DXF or CF2 formats to reusable die-layouts, with clear definition of 1Up die-lines and their position and orientation on the layout.








Legacy die files specially from design applications, could be in flat format (DXF or PDF) or have ill-defined geometry that do not define a well-formed closed shape. Such die-layout files must be converted, fixed, and formatted correctly before they can be used in Imp as reusable die-layout. Previously, this was a manual and laborious process and took days to get this done. Now, with this intelligent application, the task has been simplified greatly.

## User Interface

The user interface of scourer is minimalistic to suit the specific purpose for which it was created.



Once an unstructured CF2 die-layout is imported, the step & repeat preview is shown in the "LAYOUT" panel and preview of each 1-Up design used on the layout is shown under the "1-UP DESIGNS" panel.

	<b>Import</b> unstructured CF2 or DXF die-layout
	<b>Export</b> structured CF2 die-layout
	<b>Options</b> to set geometry joining and matching tolerance
	<b>Edit</b> open paths or wrong geometry segments
	<b>Info</b> shows the Scourer version

Imported files are automatically processed and cleaned upon import, and the user would usually have to just click on the 'Export' button to save a structured CF2 file ready to be imported into Imp or die-database. However, when there are issues, users can exercise some options and tools to manually fix the geometry with intelligent snaps.



For any queries or demo, please email us at:

[ravi@insoftautomation.com](mailto:ravi@insoftautomation.com) | [nainesh@insoftautomation.com](mailto:nainesh@insoftautomation.com)



[www.insoftautomation.com](http://www.insoftautomation.com)