



TRAPPED IN YOUR OUTDATED DIE-LAYOUT CALCULATION SOFTWARE?



Rapid Print Layout Creation & Estimation

2016
INTERTECH™
TECHNOLOGY
AWARDS

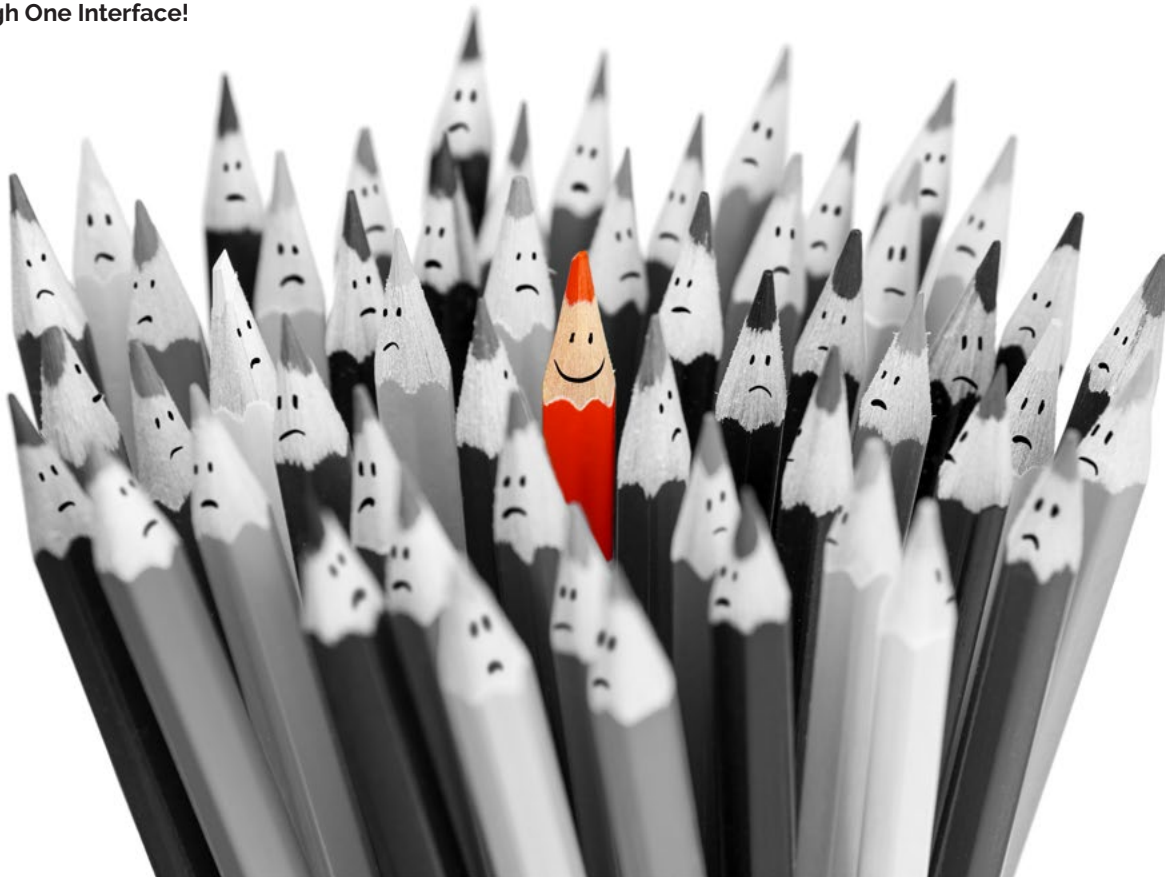


FOR INNOVATIVE EXCELLENCE

WORLD'S FIRST & ONLY

Imp-Pack is the only software that completely automates the process of layout creation for non - rectangular jobs, whether they are die cut or profile cut. The software supports a wide range of printing press - conventional sheet-fed or web-fed offset, VSOP, digital cut-sheet or continuous fed presses, large format flatbed UV or roll-to-roll printers!

All through One Interface!



Generating a layout plan for a die-cut job is a complex task. It requires simultaneous tweaking of multiple parameters to minimize cost and increase throughput. Imp-Pack is the ideal tool that will empower an estimator to generate accurate estimates based on concrete plans. Moreover, the layouts created at the estimation stage can be edited any time later during the planning or prepress stage to generate outputs for your printing or die-making.

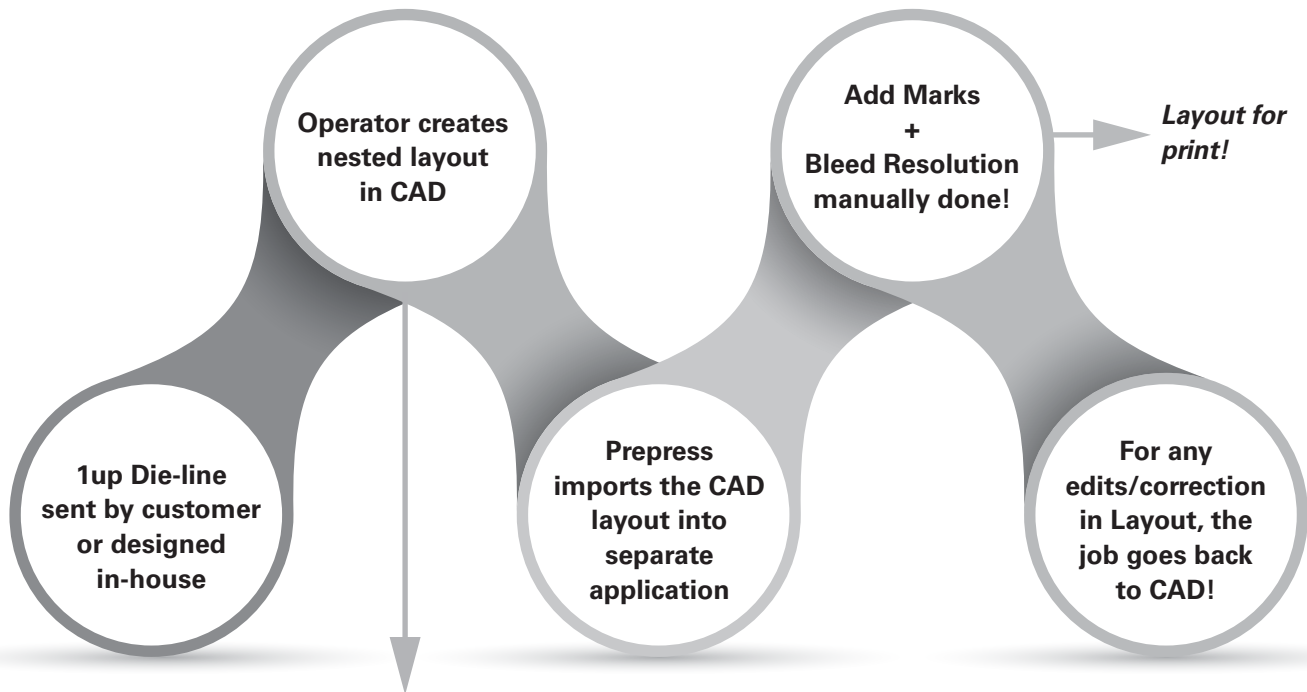
“ *With Imp Software estimation has become an exact science. **Young estimators can now deliver accurate plans as many years of experienced estimator would.** We have **integrated Imp with our Dynamics AX ERP system from MPS Graphics, Denmark.** It is the **heart of our planning, estimating and imposition.*** ”

- Angel Viveros, Foli De México

CONVENTIONAL WORKFLOW

The conventional workflow of creating layout plans for die-cut jobs revolves around the CAD application. The operator manually finds out the optimum sheet size that fits the step and repeat pattern. The estimator needs this layout information from CAD to prepare the final quote!

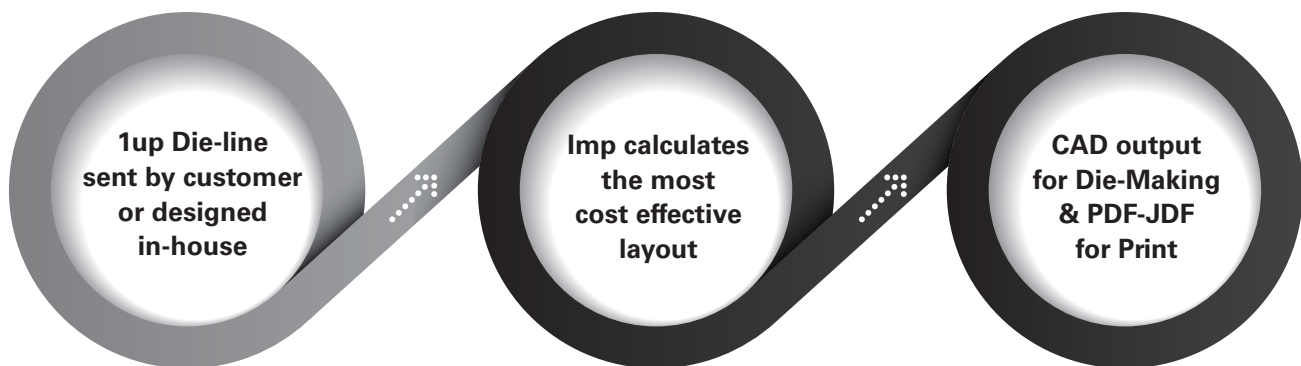
Once approved, the plan from CAD goes to prepress where PDF artwork and marks are assigned to the layout in a separate application. In case of any edits in the layout, the job goes back to CAD and process is repeated.



Operator manually decides the most optimum sheetsize, existing die-reuse, emboss, braille, foil costs and single cuts! Output for die-making is sent from the CAD.

DOES YOUR ESTIMATOR DEPEND ON A CAD OPERATOR?

SIMPLIFIED WORKFLOW WITH IMP-PACK

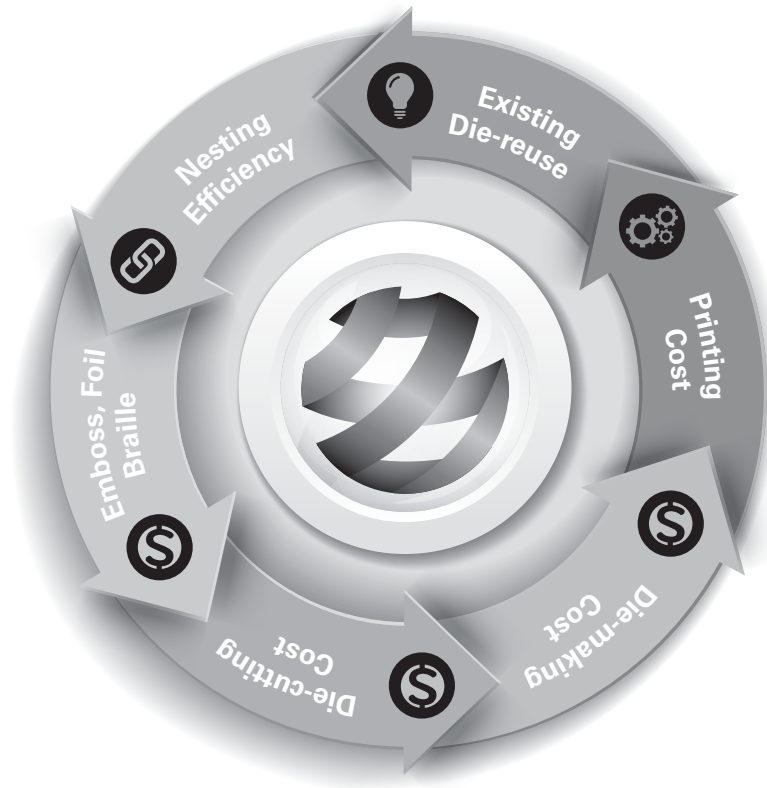


BREAKTHROUGH INNOVATIONS

Imp-Pack offers full automation for creating layout plans for die-cut jobs. Software intelligence is the key to achieving such levels of automation. Sophisticated algorithms, advanced software technology and cutting edge engineering embodied in Imp give it the power and productivity that goes to work for you. **Here are a few of the many unique intelligence capabilities of Imp-Pack software:**

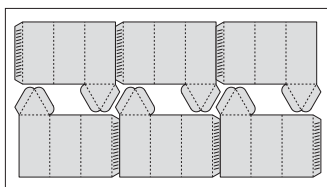
HOLISTIC COST BASED OPTIMIZATION

As minimizing overall cost of the final printed product is the optimization goal, Imp will consider multiple scenarios to strike the right balance between independent cost functions.

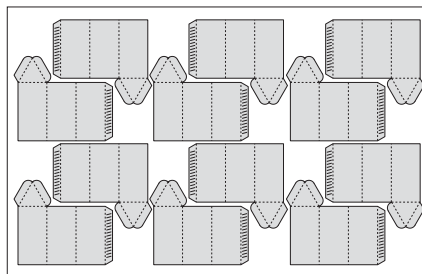


ADAPTIVE INTERLOCKING PATTERN

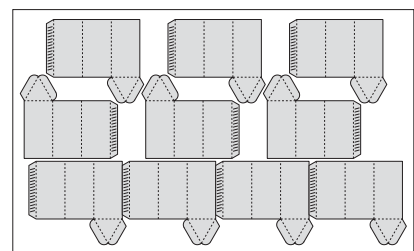
When constrained by an available list of sheet sizes or reel widths, it is critical to consider multiple interlocking patterns for a single job, as shown in the illustrations below. Imp-Pack dynamically generates the repeat pattern that is best for that sheet size.



Interlock pattern ideal when the fit is tighter in the vertical direction



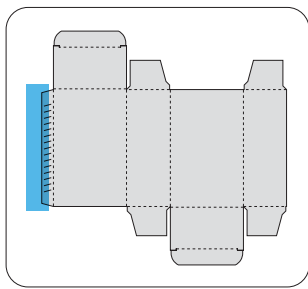
Interlock pattern ideal when the fit is tighter in the horizontal direction



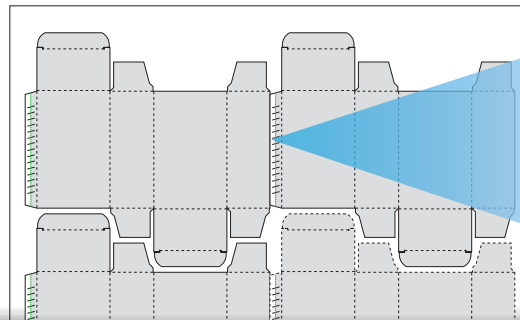
Multiple repeat patterns within the same sheet

INTELLIGENT SINGLE CUTS

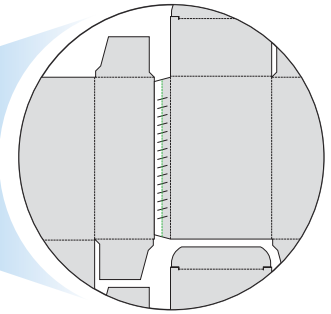
Just mark non-critical region(s) on the job and the software will know where it can collapse the gap between jobs on the layout to make it a single cut. This important automation step is either absent or not so automated in competing solutions, which means that the layout created by other software solutions often requires manual intervention.



Marking non-critical regions like Glue Flap in this example



Auto plan layout



Imp automatically plans the Glue Flap regions as single cut

TRUE BLEEDING TECHNOLOGY

With a radically new approach, bleed overlap resolution is completely automated. Just mark non-critical regions on the single-up and Imp-Pack will know how to resolve bleed overlap conflicts on the layout. **Absolutely no further manual intervention is required.**

No matter how complex the overlap regions are, Imp-Pack can split the space between profiles accurately & automatically.



“ We are **very satisfied with the level of customer service that we have received during our implementation.** The addition of the **die library has enabled us to catalog and select dies more easily.** Choosing Imp was an important part of our strategy **for an efficient overall workflow.** ”

- Jack Brown, Graphic Visual Solutions, USA

DIE-LIBRARY

The Die-Library software is capable of comparing unfolded outlines of new jobs with thousands of jobs in the database and finding close matches. User can superimpose the geometries and graphically see how close the match is.

DIE SEARCH

Search Conditions

Outline geometry must match closely Tolerance Low High

Customer name: Match whole word

[+ More](#) [Get Matching Jobs](#)

	<table border="1"><tr><td>ID</td><td>1009</td></tr><tr><td>Width</td><td>650 mm</td></tr><tr><td>Height</td><td>440 mm</td></tr><tr><td>Ups</td><td>6</td></tr><tr><td>Max Uses</td><td>100000</td></tr><tr><td>Work Style</td><td>Simplex</td></tr></table>	ID	1009	Width	650 mm	Height	440 mm	Ups	6	Max Uses	100000	Work Style	Simplex	
ID	1009													
Width	650 mm													
Height	440 mm													
Ups	6													
Max Uses	100000													
Work Style	Simplex													

Perfect match

	<table border="1"><tr><td>ID</td><td>1203</td></tr><tr><td>Width</td><td>470 mm</td></tr><tr><td>Height</td><td>440 mm</td></tr><tr><td>Ups</td><td>4</td></tr><tr><td>Max Uses</td><td>75000</td></tr><tr><td>Work Style</td><td>Simplex</td></tr></table>	ID	1203	Width	470 mm	Height	440 mm	Ups	4	Max Uses	75000	Work Style	Simplex	
ID	1203													
Width	470 mm													
Height	440 mm													
Ups	4													
Max Uses	75000													
Work Style	Simplex													

99.45% match

	<table border="1"><tr><td>ID</td><td>1458</td></tr><tr><td>Width</td><td>600 mm</td></tr><tr><td>Height</td><td>400 mm</td></tr><tr><td>Ups</td><td>6</td></tr><tr><td>Max Uses</td><td>100000</td></tr><tr><td>Work Style</td><td>Simplex</td></tr></table>	ID	1458	Width	600 mm	Height	400 mm	Ups	6	Max Uses	100000	Work Style	Simplex	
ID	1458													
Width	600 mm													
Height	400 mm													
Ups	6													
Max Uses	100000													
Work Style	Simplex													

73% match

BENEFITS OF IMP-PACK

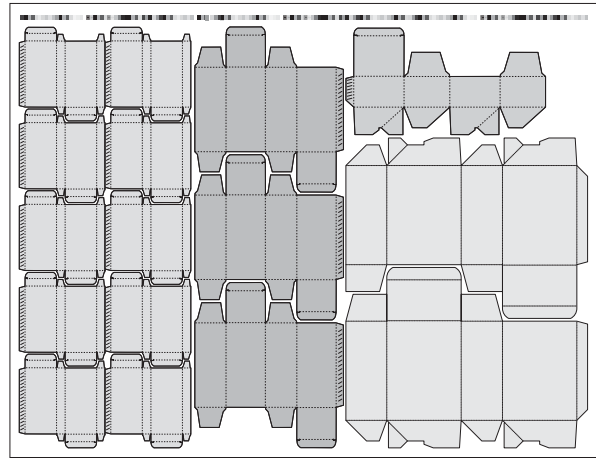
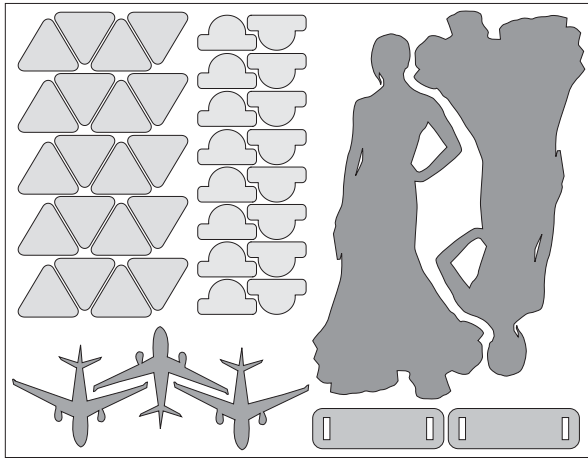
ACCURATE & SPEEDY ESTIMATES: In a few seconds, your estimators can graphically evaluate the best way to lay out a job, while minimizing printing and finishing costs. The estimators can evaluate the trade-off between nesting efficiency, press time, die-making cost, braille / emboss / foil block making costs to the last penny!

SAVE TIME IN CAD & PRE-PRESS: Once Imp-Pack is in place, the CAD department can let go of creating step & repeat layouts and focus on design. Similarly, the prepress department can let go of imposition and focus on PDF and content handling. Imp-Pack can be that single application which will generate output for printing as well as die-making / cutting. There is no need to reproduce layouts generated at estimation stage later in CAD or prepress department.

0% CHANCE OF MISSING A REUSABLE DIE: Now that searching based on outline geometry is possible, maintaining and searching die-database was never this easy. Estimators & planner can search the matching die from database in a single click!

GANGING

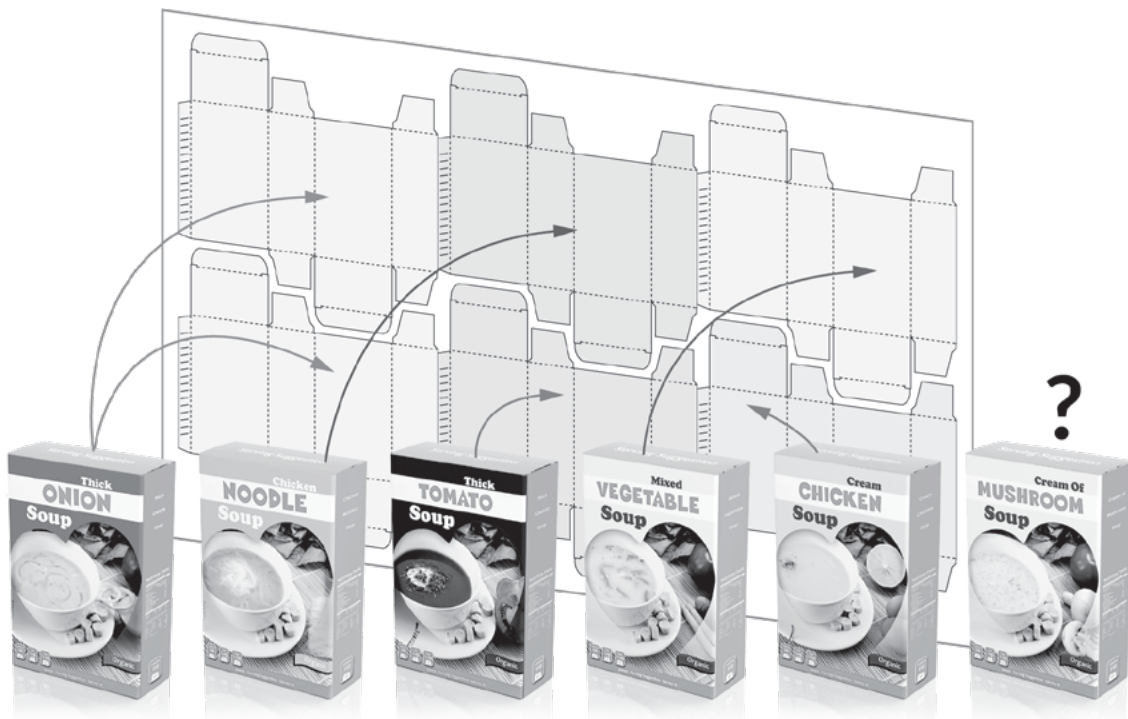
Imp-Pack is the most effective & comprehensive ganging tool available in the market today. It is powered by very sophisticated and highly evolved ganging algorithms which are capable of optimizing jobs of different shapes, quantities, colors & coatings across multiple sheets/reel sizes and presses.



Imp-Pack can also be used to optimize jobs on Large Format Flatbed or Roll-to-Roll Digital Printers. The media cost can be defined per sheet and Imp-Pack can plan jobs on these big sheets. Die-line output can be DXF/CF2 or HPGL for your digital cutting machines.

SINGLE DIE MULTIPLE ARTWORKS

Packaging jobs are often designed with multiple artworks to accommodate different flavors, regions, languages and cultures. The quantities required for each design may vary. Since the structural design remains common, Imp-Pack can plan these different variants with different numbers of ups to achieve the required quantity on an existing step & repeat layout.



ONE INTERFACE

Imp is the only software in the world to offer layout planning and imposition for wide range of printing technologies - Conventional Sheet-fed and Web-fed offset, VSOP, Digital Cut-Sheet and Continuous-fed, Large Format Flatbed UV and Roll-to-Roll Printers.



InSoft
AUTOMATION
Automate & Optimize!

InSoft Automation Pvt. Ltd.

15, Medavakkam Road, Sholinganallur,
Chennai 600 119, TN, India
T: +91 44 2450 6112 F: +91 44 2450 6030
E: sales@insoftautomation.com

Copyright Notice: This document is copyrighted with all rights reserved. No part of this document may be reproduced, transcribed, transmitted, stored, in an electronic retrieval system, or translated into any language in any form by any means without the prior written permission of InSoft Automation. InSoft Automation makes no warranties, express or implied in this document. In no event shall InSoft be liable for damages of any kind arising out of use of this document or the information contained within.

Confidentiality Statement: This document contains information that is confidential or proprietary to InSoft Automation. By accepting this document, you agree that: (1) if there is any pre-existing contract containing disclosure and use restrictions between your company and InSoft, you and your Company will use this information in reliance on and subject to the terms of any such pre-existing contract; or (2) if there is no contractual relationship between you or your Company and InSoft Automation, you and your Company agree to protect this information and not reproduce, disclose or use the information in any way, except as may be required by law.

© InSoft Automation Pvt. Ltd.

Images sourced from Shutterstock, Dreamstime, Graphicstock and Pixabay. All stock photo rights reserved with their respective owners. Illustrations used for representation purpose only. Actual product may vary. This document is subject to changes without prior notice.